



Kensington The Professionals' Choice™

Wellness, Productivity
& Ergonomic Solutions

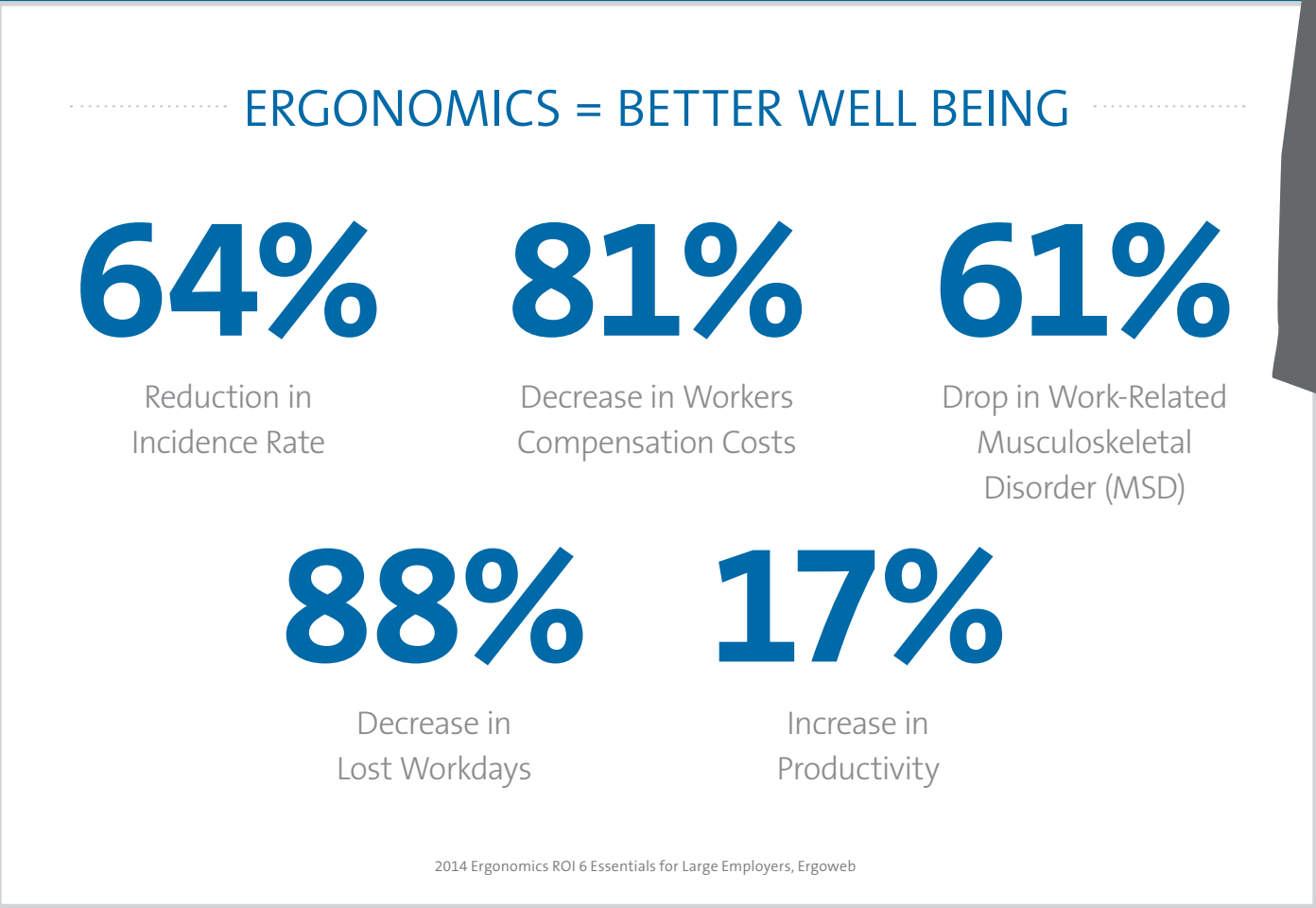
Preventing Musculoskeletal Disorders

By enhancing ergonomics within the workspace, the prevention of MSDs reduces the total cost of injuries to businesses, and ensures employee comfort, productivity, and well-being.

Musculoskeletal disorders (MSDs) are injuries or pain in the body’s joints, ligaments, muscles, nerves, tendons, and structures that support neck, back and limbs. MSDs are among the most common, preventable injuries within the office workspace.

Musculoskeletal disorders account for nearly half of all absences from work, and a small investment in workspace wellness and ergonomics can not only prevent MSDs before they occur, but it can generate significant rewards in productivity, and well being.

Kensington provides a comprehensive global product portfolio, enhanced by our patented SmartFit® comfort color system, to enable users to prevent MSDs before they happen.



Activate Your Employees' Health and Wellness

Design a workspace to fit in with you and reach new levels of wellness, whatever way you work. There are numerous wellness benefits to working in a healthy ergonomic workplace which is designed to fit and meet your personal needs.

The average person spends 90,000 hours working. On a daily basis this equates to 7 hours per day at their desk, it's therefore really important to take time and manage your well being and take note of any early signs of MSDs.



What Are the Benefits of a Healthy, Wellness Focused Workplace?

At Kensington, we have the opportunity to offer total wellness solution, across a number of categories, in a way that allows customers to immediately understand the benefits of achieving employees' optimal well being while working.

53%

of organizations want to create a culture that promotes health and wellness

CURRENTLY

60%

of organizations offer wellness programs

SmartFit® Explained

Complying with ergonomic standards doesn't have to be a pain. The Kensington SmartFit® system eliminates the complication, confusion, and high cost of giving your employees safe, comfortable ergonomic workstations.

Why SmartFit®? Our SmartFit® products are quick and easy to set up. Using our "handy" guide, you can simply adjust your product to your personal comfort color setting.

Our simple color coded system allows users to adjust to the perfect fit in seconds, leaving you time to deal with more important projects.

When It Comes to Comfort, Fit is Everything

The Kensington SmartFit® system enables you to customize your work environment to get maximum comfort from your desktop accessories. All that you need is the SmartFit® hand chart to quickly and accurately set up and adjust a product to your personal comfort setting. If you share a workspace with other users, SmartFit® allows easy and accurate adjustment for each individual, saving both time and money.

DETERMINE YOUR PERSONAL FIT IN 3 EASY STEPS

STEP 1 – MEASURE

With every SmartFit® product, you will receive a hand chart in the box. This hand chart will assist you in finding your specific SmartFit® comfort color to customize your fit.

How do you measure?

With your right wrist on the baseline of the hand chart, lay your entire hand over the diagram. The tip of your middle finger will point to your SmartFit® color.



STEP 2 – ADJUST

The next step is to adjust the color wheel on your SmartFit® product to your specific color, and you're ready to go.

Not all SmartFit® products have a color wheel, please make sure you read the instructions to understand how to adjust each SmartFit® product.



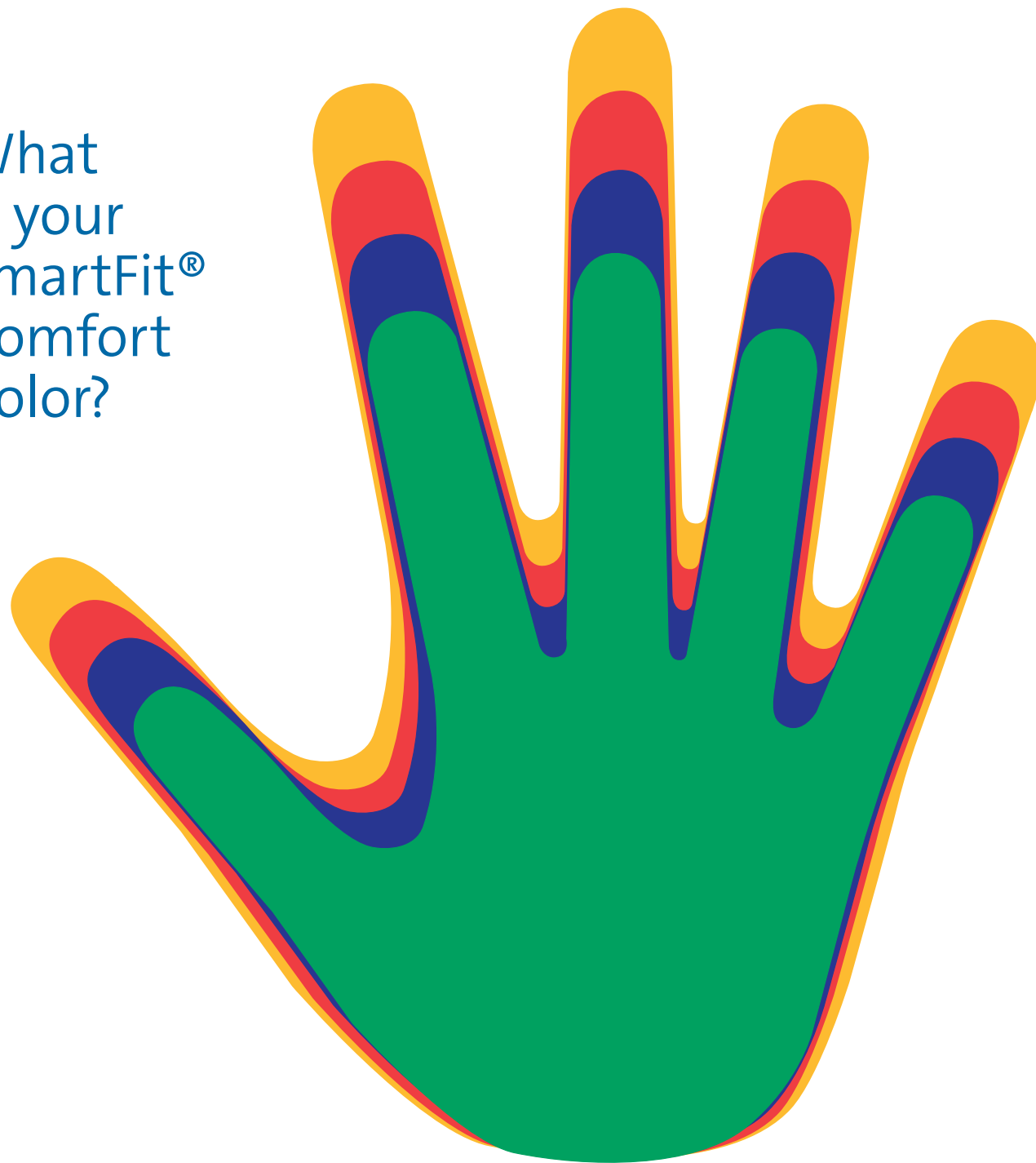
STEP 3 – FIT

The final step is to validate the fit of your SmartFit® product at your workstation. As we make many different SmartFit® products, please refer to the user guide in each product package for specific instructions.



Time to Get Your Team Working Well

What
is your
SmartFit®
Comfort
Color?



With every SmartFit® product, you will receive a hand chart in the box. This hand chart will assist you in finding your specific SmartFit® color to customize your fit. With your right wrist on the baseline of the hand chart, lay your entire hand over the diagram. The tip of your middle finger will point to your SmartFit® color, and achieve the perfect fit in seconds!



DID YOU KNOW?

61% of employees agree that they've made healthier lifestyle choices because of their **company's ergonomic and wellness programs**

—ERGOWEB



Foot Rests



Wrist Rests



Monitor Stands



Back Rests



Keyboard
Platforms

Improve employee well-being and productivity